



Caledonian

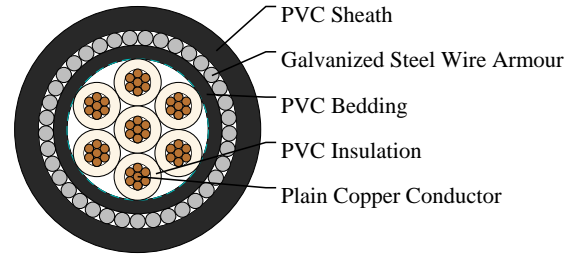
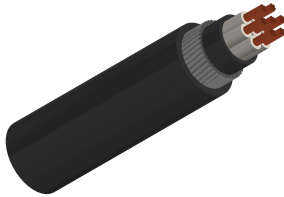
BS 6346 Cables

www.caledonian-cables.com

marketing@caledonian-cables.com

BS 6346 PVC Insulated Cables, 600/1000V

Multi-core 600/1000V cables with stranded copper conductors
7C1.5



APPLICATIONS

These power and control cables are used for electricity supply in low voltage installation system. They are well adapted to underground use in industrial applications where chemical and mechanical protections are needed (refinery areas, chemical plant...).

STANDARDS

BS 6346

FIRE PERFORMANCE

Flame Retardance	IEC60332 part 1, BS4066 part 1
------------------	--------------------------------

VOLTAGE RATING

600/1000V

CABLE CONSTRUCTION

Conductor: Copper conductor, round stranded Class 2 to BS 6460, IEC 60228

Insulation: PVC (Polyvinyl Chloride) type T11

Filler (optional): PVC or Polypropylene yarn

Binder Tape (optional): Polyester (Mylar) tape

Inner Sheath/ Bedding: PVC (Polyvinyl Chloride)

Armour: SWA (Galvanized Steel Wire or Tape Armour)

Outer Sheath: PVC (Polyvinyl Chloride), type TM1

COLOUR CODE

Insulation Colour:

Above 5 Cores: White Cores with black numbers

PHYSICAL AND THERMAL PROPERTIES

Temperature rating: -20°C to +60°C

Bending radius:



Caledonian

BS 6346 Cables

www.caledonian-cables.com

marketing@caledonian-cables.com

Single core: 10 x overall diameter

Multicores: 8 x overall diameter

DIMENSION AND PARAMETERS

No. of Cores × Cross- sectional Area	No./Nominal Diameter of Strands	Nominal Insulation Thickness	Nominal Bedding Thickness	Nominal Sheath Thickness	Nominal Steel Wire Armour Diameter	Approx. Overall Diameter	Approx. Weight
No. × mm ²	no./mm	mm	mm	mm	mm	mm	kg/km
7×1.5	7/0.53	0.6	0.8	1.4	0.9	15.2	500